

# Observing natural pH dynamics in coastal environments

Paul Matson, Libe Washburn, Pauline Yu,  
Todd Martz, Gretchen Hofmann



Data SIO, NOAA, U.S. Navy, NGA, GEBCO  
Image © 2011 DigitalGlobe

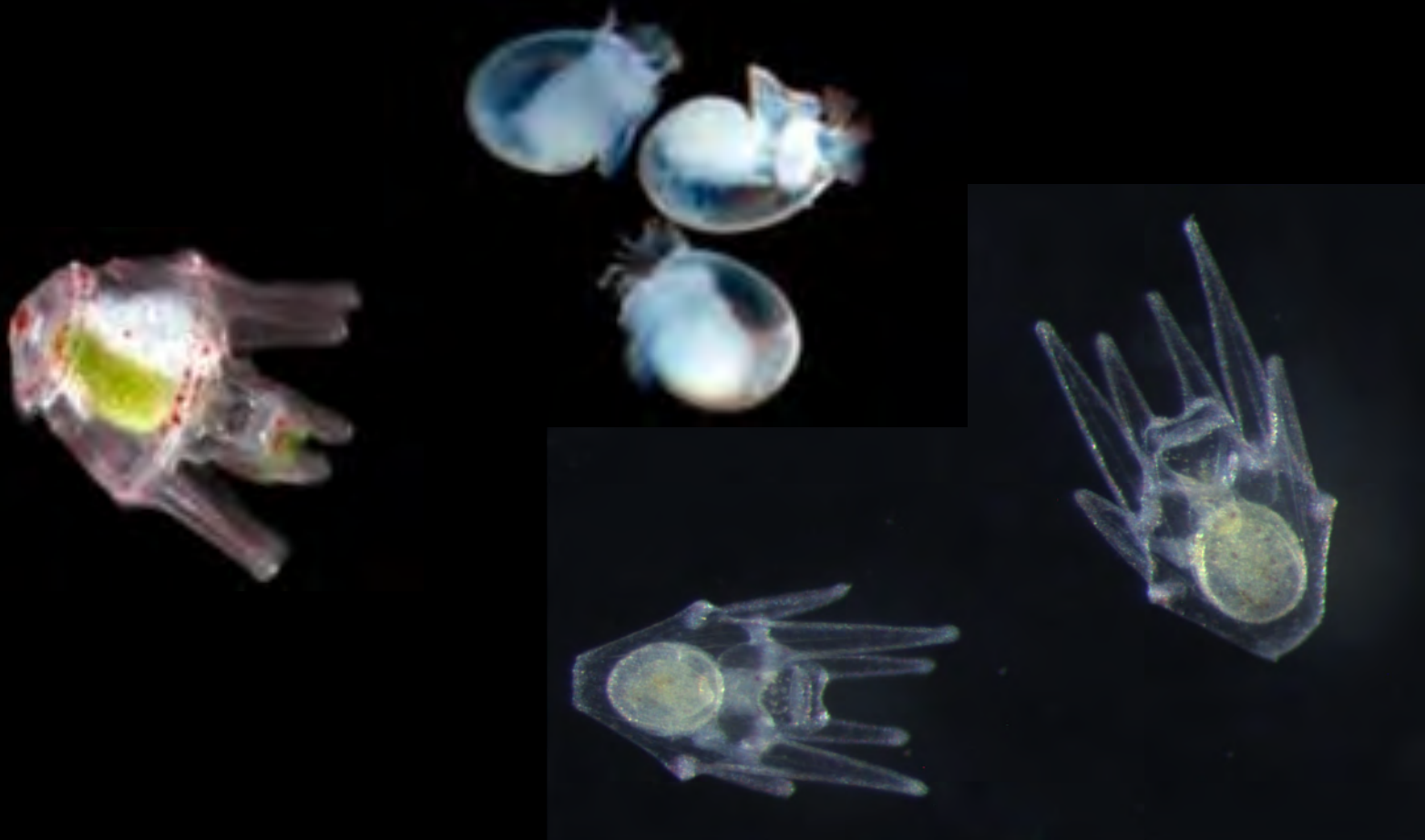
Image U.S. Geological Survey

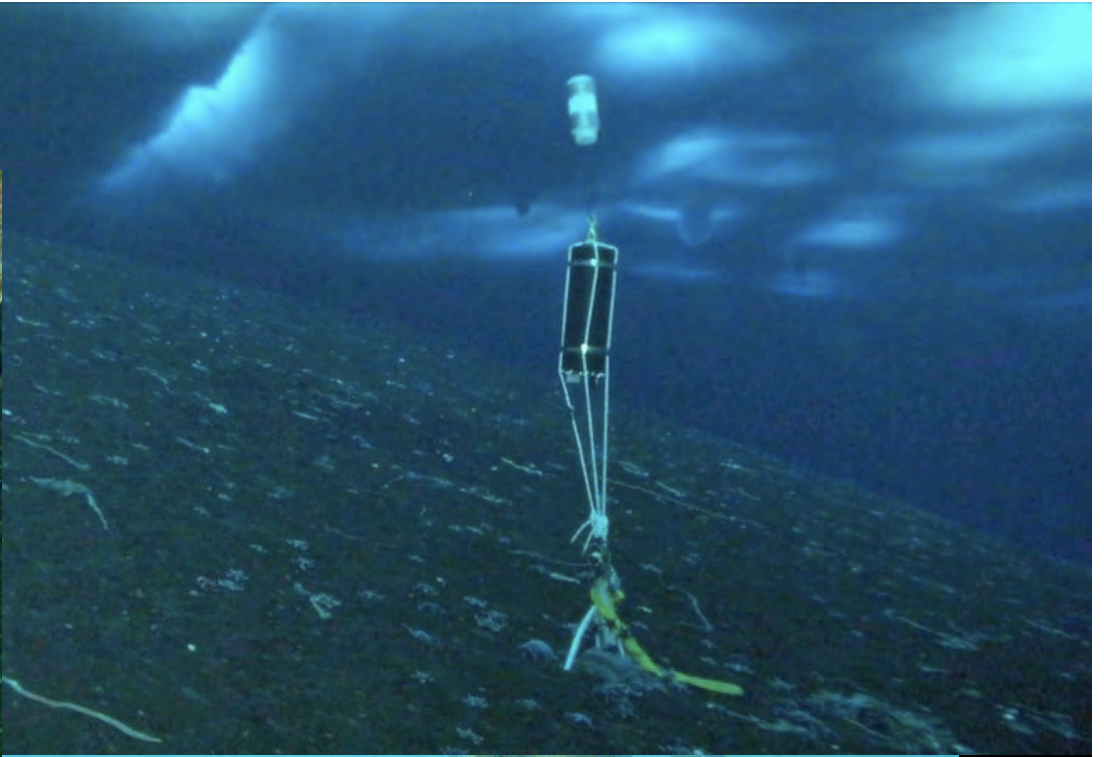
34°13'17.14" N 119°42'56.39" W elev -248 m

©2010 Google

Eye alt 255.96 km

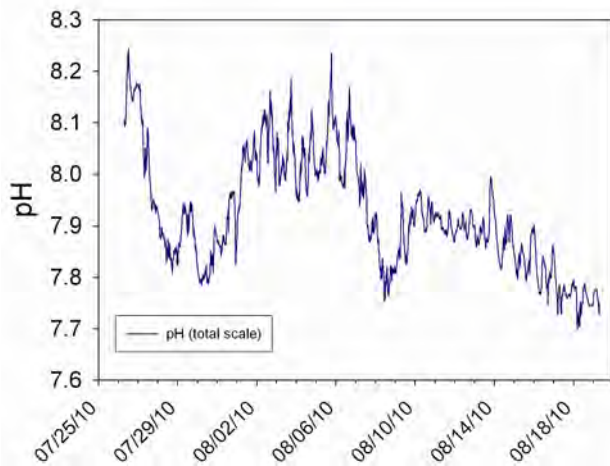
# How will calcified larvae respond to OA?





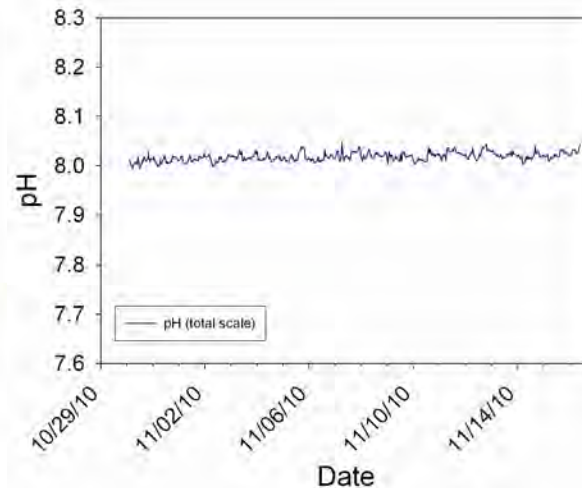
# Present-day pH Environment: 3-Ecosystem Comparison

Santa Barbara Channel



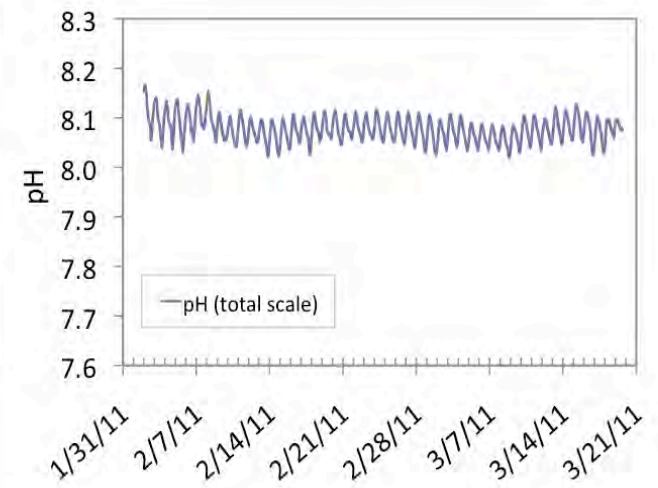
Yu, Martz, Hofmann (2011)  
JEMBE 400: 288-295

McMurdo Sound, Antarctica



Matson, Martz, Hofmann (2011)  
*Antarctic Science* (accepted)

Moorea, French Polynesia



Rivest, Martz, Hofmann (2011)  
(unpubl. results)

